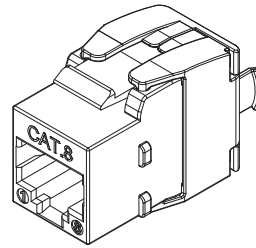
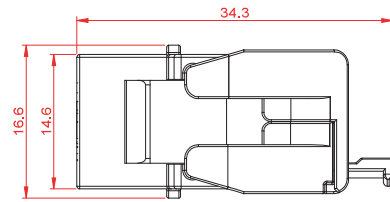


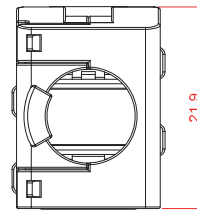
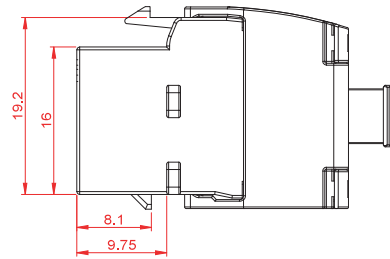
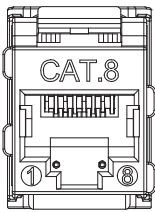
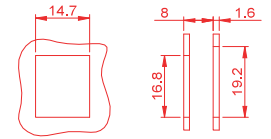
NOTE: ALL MATERIAL COMPLIANT ROHS STANDARD

ACCORDING TO : ANSI/TIA-568.2-D  
 ISO/IEC 11801-4  
 IEC 60503-7  
 IEEE 802.3bt Power over Ethernet Plus (4PPoE) application  
 IEC 60512-20/02 Mating and unmating connectors under electrical load

REVISION INFORMATION			
Rev.	Rev. Date	Modified By	Brief Description



SUGGESTED MOUNTING CUTOUT

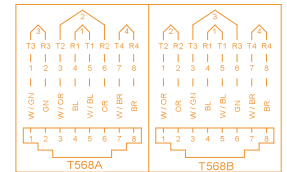
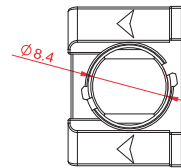
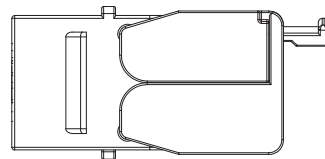


ENCLOSURE  
 IDC CAP X 1 PC  
 NYLON CABLE TIE X 1 PC  
 INSTRUCTION X 1 PC



Cat 8

56Y4  
 E145249



**MATERIAL**

BRACKET: NICKEL SILVER ALLOY,  
 KEYSTONE JACK HOUSING: ZINC ALLOY NICKEL PLATED,  
 REAR HOUSING: ZINC ALLOY NICKEL PLATED,  
 KEYSTONE JACK LATCH: PC+ABS/UL94V0,  
 CONTACT HOLDER: PC/UL94V0,  
 JACK CONTACTS: PHOSPHOR BRONZE, 50U" GOLD PAINTING,  
 IDC PLASTIC: PC/UL94V0,  
 IDC TERMINALS: PHOSPHOR BRONZE, TIN OVER NICKEL UNDERCOAT.

**PHYSICAL CHARACTERISTICS**

INSERTION LIFE: 750 MATING CYCLES WITH FCC COMPLIANT 8P PLUG,  
 PLUG RETENTION FORCE: 11 LBF MINIMUM,  
 DURABILITY: 30 TERMINATION CYCLES,  
 CONTACT COMPATIBILITY: ACCOMMODATES 22 TO 24 AWG SOLID,  
 OPERATING TEMPERATURE RANGE: -40 °C TO 60 °C,  
 STORAGE TEMPERATURE RANGE: -40 °C TO 68 °C,  
 HUMIDITY: 10% TO 90% RH (NON-CONDENSING).

**ELECTRICAL**

INSULATION RESISTANCE: 500 MΩ MINIMUM,  
 DC CURRENT RATING: 1.5 Amps,  
 INPUT TO OUTPUT D.C. RESISTANCE: 100 mΩ MAXIMUM,  
 CONTACT RESISTANCE: 20 mΩ MAXIMUM,  
 VOLTAGE PROOF (CONTACT TO CONTACT): 1000 V AC,  
 VOLTAGE PROOF (CONTACT TO SHIELD): 1500 V DC.

**NOTE**

\* ONLY ACCEPT RJ45 8P8C PLUG.

Purchase @ **LANshack.com** Contact Sales 888-568-1230  
 Email Sales@LANshack.com

③					Unless specified on the drawing, tolerances are per the follows: .            +1 .x          +0.2 .xx        +0.05	DRAWN BY	Shou	DATE:	4/13/2020	DESCRIPTION:	Cat.8 Tool Less Shielded Keystone Jack
②						CHECKED BY		SHEET 1 of 3	ITEM NO.	CAT8-KSJ-S-E1	
①						APPROVED BY		SCALE 1:1	REV.00	UNIT:mm	
NO.	PART NAME	SPECIFICATION DESCRIPTION	QTY	UNIT							