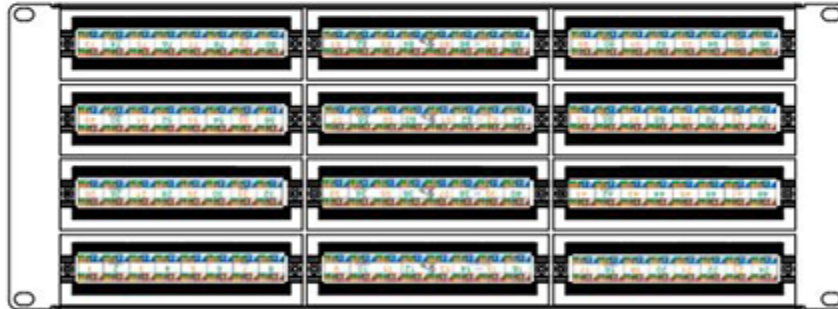
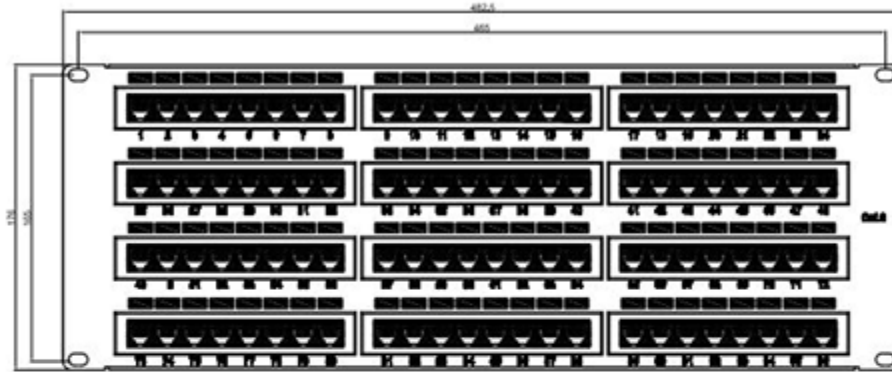


NOTE: ALL MATERIAL COMPLIANT ROHS STANDARD

REVISION INFORMATION			
Rev.	Rev. Date	Modified By	Brief Description



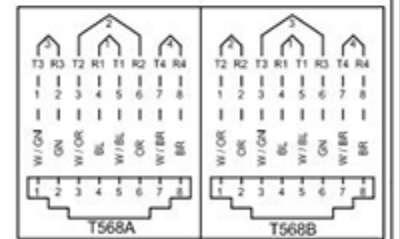
Physical Specification
 Panel: SPOC
 Jack Housing: PBT UL94V0
 Solder: 60/40 Phosphor Bronze CS210, 3mm, Plating: 120µ" Matte Tin over 50µ" Nickel undercoat, Solder: Plating: 50µ" Gold over the plated surface on contact area.
 PIN Holder: PBT UL94V0
 IDC Housing: PC UL94V0
 IDC Contact: Phosphor Bronze CS191, 20AWG, 200µ" Matte Tin over 100µ" soft Nickel undercoat
 PCB: FR-4

Insertion Life: 750 mating cycles with FCC compliant RJ-45 plug
Contact Force: 100 grams with FCC compliant RJ-45 plug
Plug Retention Force: 1.1 lbf min
Duration: 200 termination cycles
Contact Compliance: Accommodates 22 to 26 AWG standard
SUITABLE IMPACT TOOL - 110 STYLE PUNCHDOWN TOOL
Operating Temperature Range: 0 °C to 60 °C
Storage Temperature Range: -40 °C to 88 °C
Humidity: 10%~95%RH

Electrical
Insulation Resistance: 500 MΩ
Dielectric Withstanding Voltage: 1000 V AC
DC Current Rating: 1.5 Amps
DC Resistance: 0.1Ω
Contact Resistance: 20 MΩ



ACCORDING TO ANSI/TIA-568-C.2
 REQUIREMENTS
 C6 CHANNEL COMPLIANT



Cat 6

56Y4
 E145249



PURCHASE @ LANSHACK.COM
CONTACT SALES@LANSHACK.COM
888-568-1230

NO.	PART NAME	SPECIFICATION DESCRIPTION	QTY	UNIT
③				
②	Cable Ties	3*100MM	12*4	PCS
①	IDC Cap	15*9,5*9,6MM	24*4	PCS

DRAWN BY	WLL	DATE:	2017/07/13	DESCRIPTION:	Cat.6 110 Type Patch Panel 96Port Rackmount
CHECKED BY		SHEET	1 of 1	ITEM NO.	110C6-96P-PP
APPROVED BY		SCALE	1:2	REV.	01
		UNIT:	mm		